



LIGHTIFY Onboarding Procedure

Elements of the LIGHTIFY system

Additional to the LIGHTIFY products the following is needed:

- Internet connection
- Wi-Fi (WLAN) Router
- Smart device: smart-phone, tablet, ...

LIGHTIFY Products

- LIGHTIFY Gateway
- One or more of the following LIGHTIFY Products
 - LIGHTIFY CLA A TW
 - LIGHTIFY CLA A RGBW
 - LIGHTIFY PAR 16 TW
 - LIGHTIFY DOWNLIGHT
 - LIGHTIFY FLEX
 - LIGHTIFY GARDENSPOT MINI
 - LIGHTIFY SURFACE
 - ...

Before you start

Please check:

1. Internet connection via Wi-Fi- router
2. Wi-Fi (WLAN) network available
3. Wi-Fi (WLAN) password
4. Smart device: Android: 4.1.x
 IOS: 7.x

Download the LIGHTIFY-APP



Please download the latest LIGHTIFY-APP
Further info where you can find the version number please check our FAQs.
www.osram.com/lightify-4you-faq



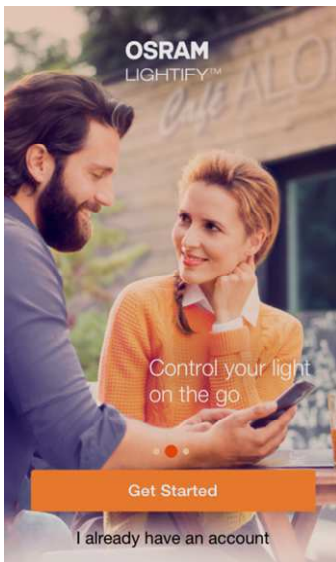
Start

Please start the LIGHTIFY App



Please ensure that you have installed the latest App version. For older App versions (until 1.1.0) the onboarding procedure is slightly different (1.Register, 2. Welcome to lightify, 3. Gateway)

Get started



Please choose "Get started"

Gateway

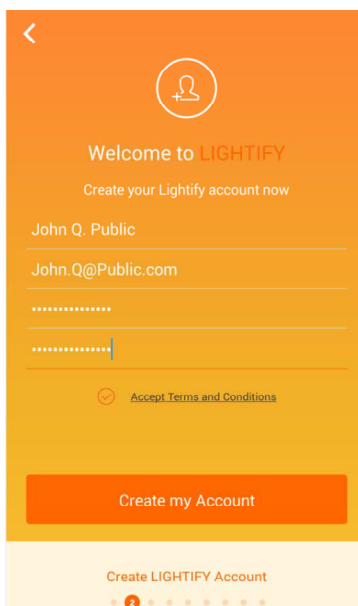


Scan the QR code or type in the serial number. Both are located on the back side of the gateway.

Next step via



Register



Further info for the registration you can find on www.osram.com/lightify

After name, email- address, password (min. 6 digits) were inserted and "create my account" was pressed an activation code will be send to your email address.

If you did not receive the email please check your SPAM folder

Welcome to LIGHTIFY

Check your email and type in the activation code. (copy / paste)



ISnjUSkQ

Next step via

Enter Activation Code

LIGHTIFY Activation

3

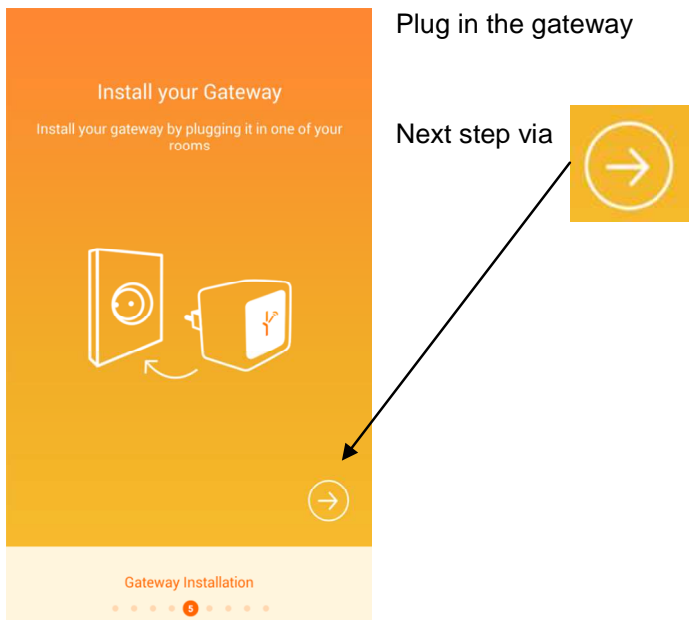
Install the Gateway

Plug in the gateway

Install your Gateway

Install your gateway by plugging it in one of your rooms

Next step via



Gateway Installation

5

Connect the Gateway with your Wi-Fi (WLAN) network



Please note the gateway password; shown on the screen

WiFi Password

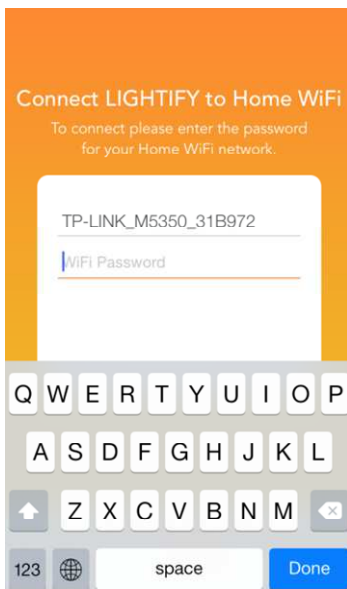
Now please go to your Wi-Fi (WLAN) settings from your smart device and use the gateway information, shown on the screen to connect the gateway to your Wi-Fi (WLAN) system.

Recommendation: copy/paste the password

Note : This is only necessary once and not required for later operation.

Go back to LIGHTIFY - App

Next step via

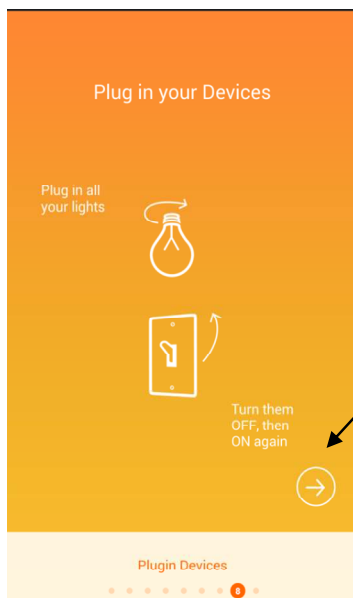


Please choose the network.

Please enter the password from your existing Wi-Fi (WLAN) system.

LIGHTIFY symbol on the gateway (front) switches from orange to green, when network connection is succeeded.

Last step

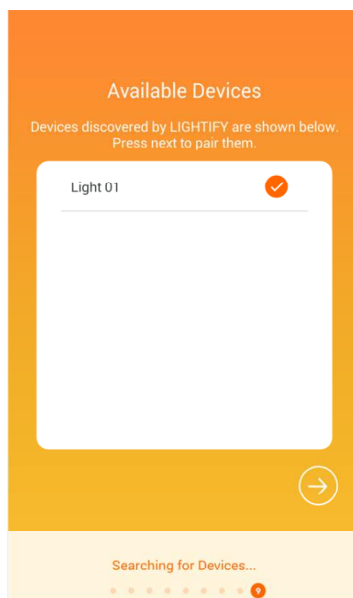


Plug in your LIGHTIFY™ product; screw in the LIGHTIFY™ lamps and switch on; light on
Please switch it off/on again in case it was on already on.

Next step via



When the LIGHTIFY product is integrated into the system it blinks once.



Process can take some minutes

In case that a light isn't shown please switch it off/on again.
Note: Lights can always be added later via the app as well.

Onboarding is finished when touching:



Please note:

All information in this guide has been prepared with great care. OSRAM, however, does not accept liability for possible errors, changes and/or omissions.